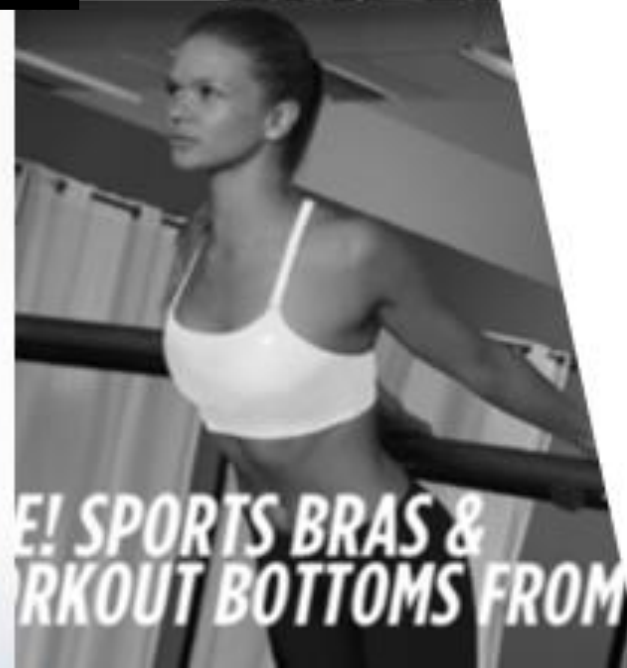




**Jungkwang Vietnam**



# 1. General Information

Name : JUNGKWANG VIETNAM CO., LTD  
Date established : DEC 22, 2000  
Ownership : J.W. Park (JUNGKWANG Co., Ltd., Seoul)  
Number of Sewing Lines : 12 Lines  
Number of Employees : 557 Employees

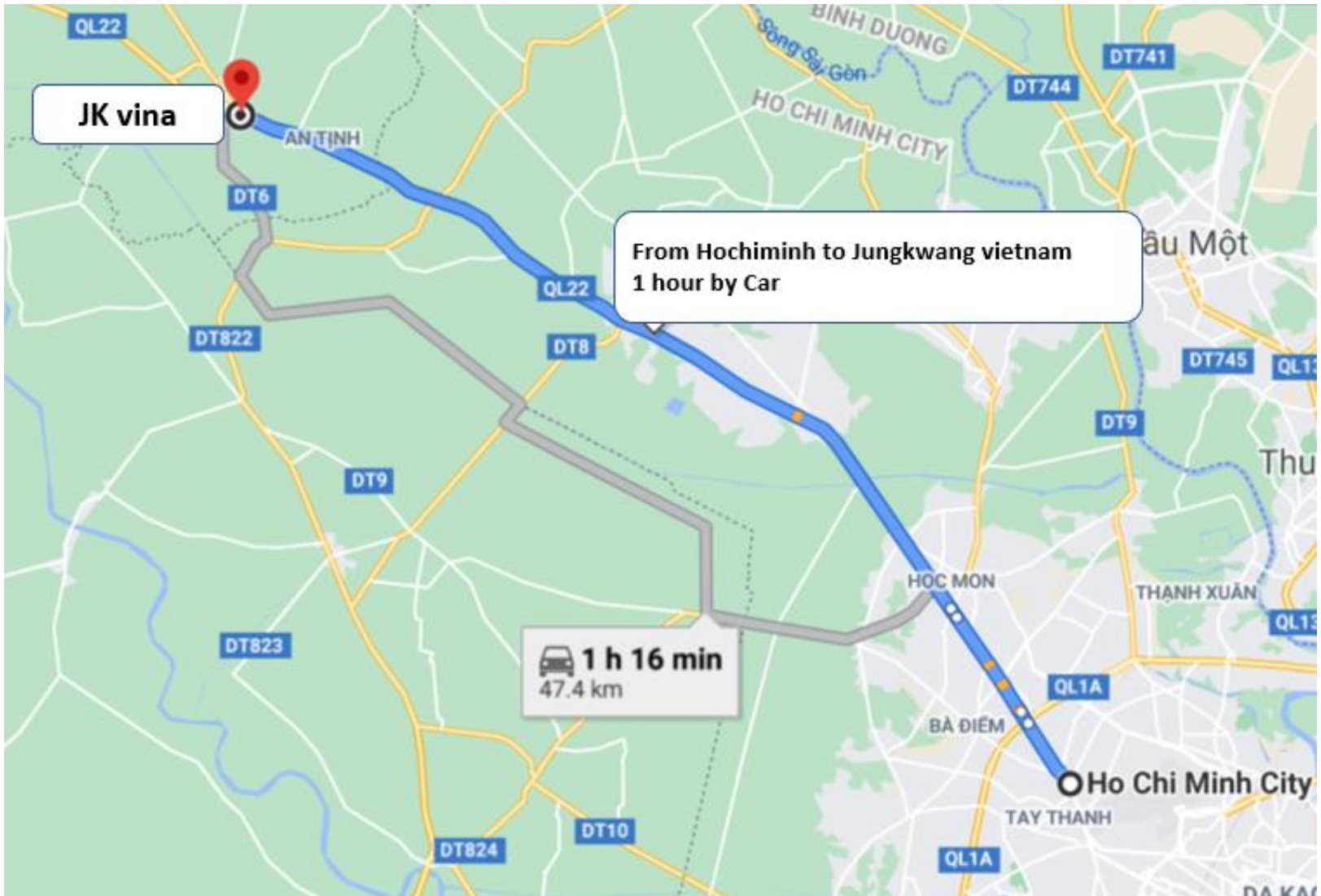
Sales through JK, Seoul supported by 3 factories,

- 1) Pinetree & JK Vina in Vietnam
- 2) Evergreen in Cambodia

Capacity :

- Leggings/Tops ----- 420,000pcs /month

## 2. Location

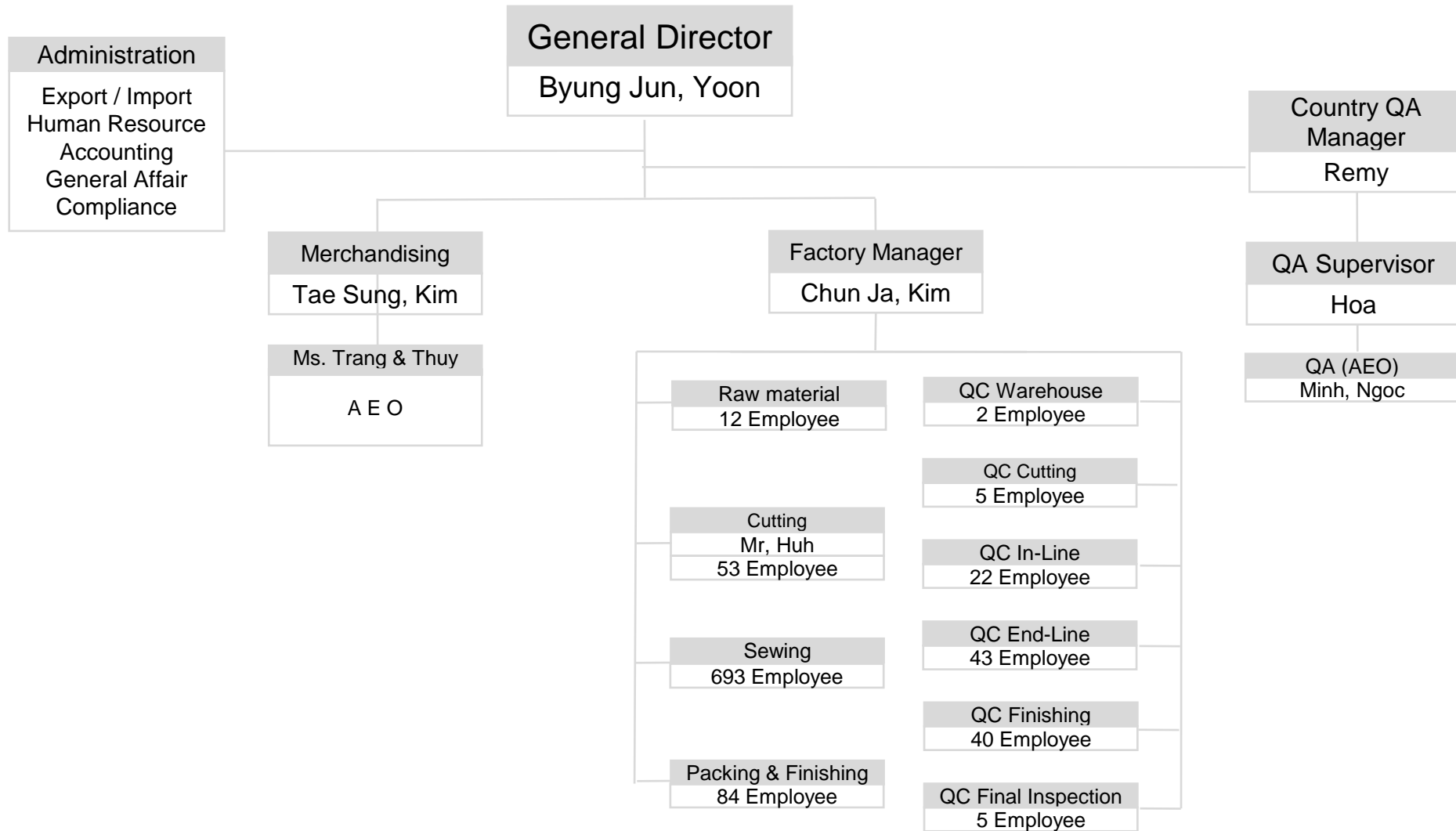


Jungkwang Vietnam

# 3. Customers



# 4. Factory Organization



## **5. JUNG KWANG VIETNAM SPECIALTY**

### **1. Production Performance**

- 1) Annual Apparel product Q'ty : 5,040,000 pcs**
- 2) 99.0 % on time delivery**

### **2. Flexibility for convertible mini line operation**

### **3. Compatible sewing line system for All knit product category**

### **4. High quality sampling thru specialized local sample team (TD/sample MR/sewer/pattern maker)**

## 6. Machine inventory

Category	Unit	Category	Unit	Category	Unit
4 thread over lock	223	Cover stitch	132	Single needle	260
Button hole	12	Double needle	20	Smocking	2
Button sew	12	Zigzag	20	Thread Rewinder	3
Bartack	8	Fabric Inspection	2	Vacumn	50
Bias Cutter	3	Flat Seam (4 needle 6 thread)	2	Cutting machine	16
Band knife	2	Fusing	2	Auto cutting machine	10
<b>TOTAL : 1,311 Units</b>					

## 7. Man power

Department	No	Department	No	Department	No
SEWER	312	PRESSER	27	ADMINISTRATION	10
HELPER	60	PACKING & FINISHING	35	MACHENIC	7
LINE LEADER	12	IN LINE Q.C	12		
SPREADER	28	END LINE Q.C	20		
CUTTER	8	FINISHING Q.C	8		
WARE HOUSE	9	Q.A AUDITOR	4		
TRIM STOCK ROON	2	FABRIC & CUTTING QC	3		
<b>TOTAL : 557 PERSON</b>					



# 8. production

## Fabric Warehouse



1. Fabrics are stored lot by lot and color by color
2. Fabric lot swatches are compared with approved shade band and actual fabric.
3. Fabrics should be inspected more than 20% by random.

## 8. production

### Fabric Relax / Trims / Cutting Section



1. Fabrics are relaxed over 24 hours before cutting.
2. Each cutted panels inspected by inspector.
3. All Trims are storage per buyer in the lock .

# 8. production

## Sewing Line



1. Sewer can turn on the red light if they have any machine trouble. Mechanics will repair immediately when they see the red light.
2. Every sewing machine have needle protector.
3. Every lines have a traffic light system for effective Q.C activities.

# 8. production

## In & End Line QC



1. Every sewing lines are checked by in- line Q.C and end- line Q.C for production quality.



2. Comments and detail sketches are posted on Q.C tables.

3. Loose threads are blown off by sucking machine

## 8. production

### Packing Area

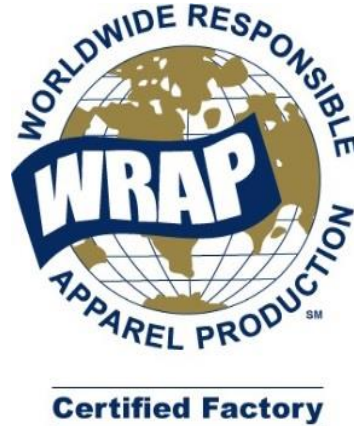


1. Packing areas are blocked by fence for security. Only authorized persons can enter to packing area.
2. There are enough spaces for carton storage.

## 9. Factory Evaluation



**BetterWork**



**THANK YOU!**

**Contact: Tom Marra | SVP Private Brands**

Jungkwang INC

M: 425.985.1792

E: [tmarra@jungkwang.com](mailto:tmarra@jungkwang.com)

**Jungkwang Vietnam**