



EVERGREEN



SPORT



1. General Information

Name : EVERGREEN
Date established : FEB 01, 1996
Ownership : J.W. Park (JUNGKWANG Co., Ltd., Seoul)
Number of Sewing Lines : 14 Lines
Number of Employees : 840 Employees

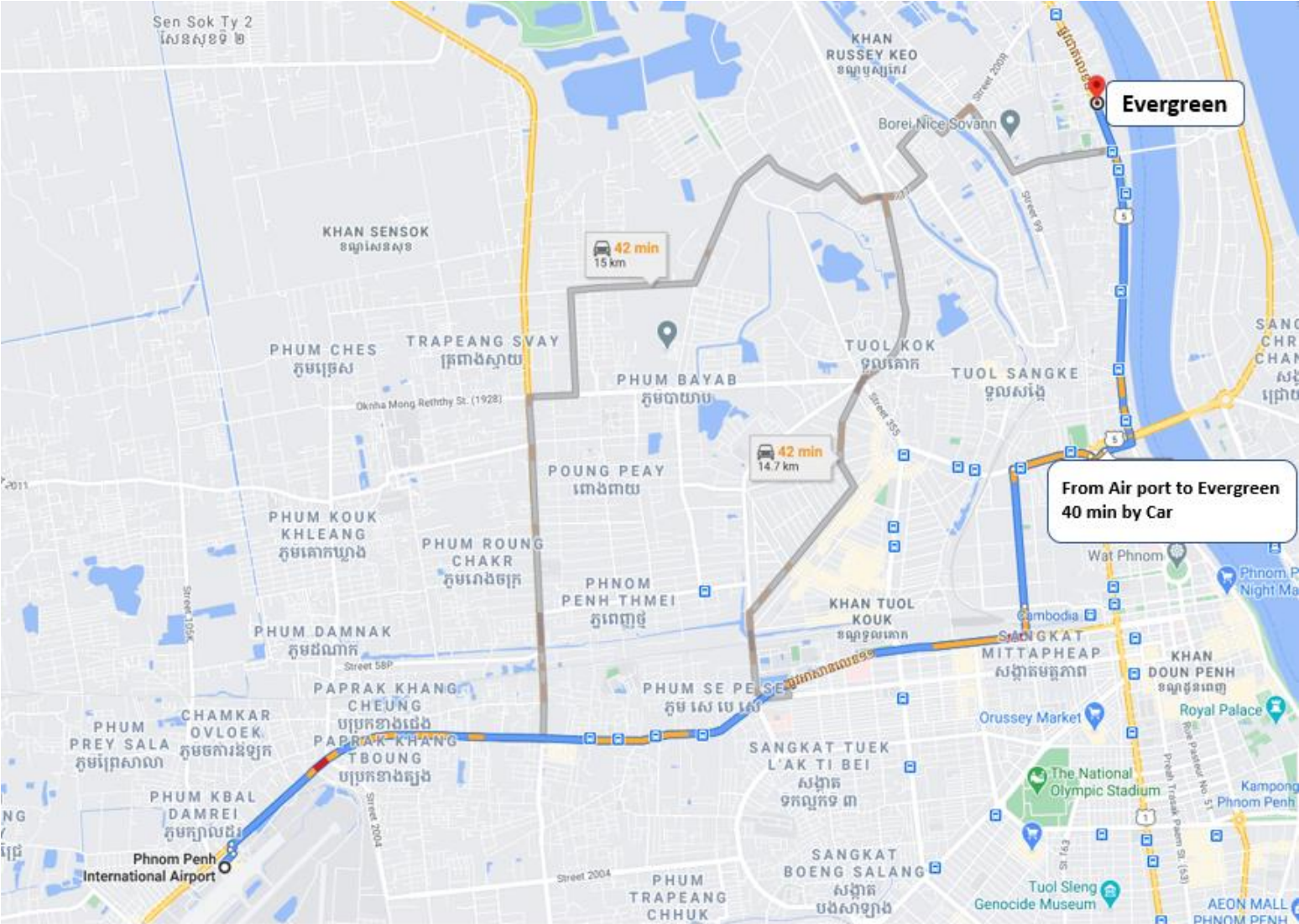
Sales through JK, Seoul supported by 3 factories,

- 1) Pinetree & JK Vina in Vietnam
- 2) Evergreen in Cambodia

Capacity :

- Knit Activewear ----- 540,000pcs/month

2. Location

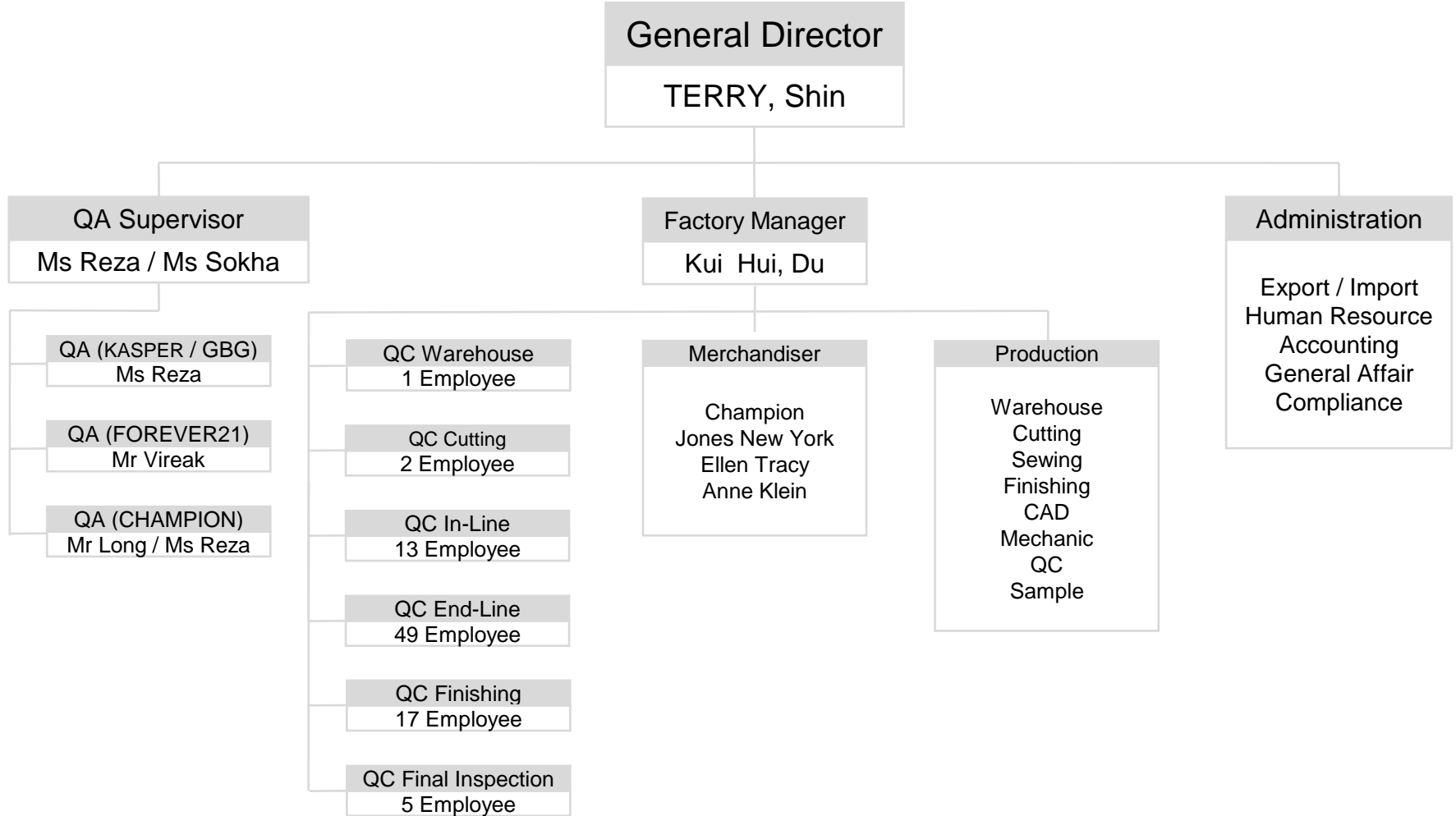


EVERGREEN

3. Customers



4. Factory Organization



5. Evergreen SPECIALTY

1. Production Performance

- 1) Annual Apparel product Q'ty : 6,480,000 pcs**
- 2) 99.0 % on time delivery**

2. Accumulated sewing skill for active style

3. Duty Free benefit to E.U. & CANADA market

6. Machine inventory

Category	Unit	Category	Unit	Category	Unit
4 thread over lock	263	Cover stitch	218	Single needle	371
Button hole	7	Double needle	20	Smocking	
Button sew	10	Zigzag	20	Thread Rewinder	3
Bartack	13	Fabric Inspection	1	Vacumn	50
Bias Cutter		Flat Seam (4 needle 6 thread)	1	Cutting machine	8
Band knife	2	Fusing	2	Auto cutting machine	
TOTAL : 989 Units					

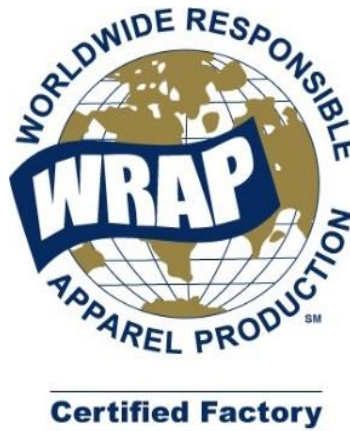
7. Man power

Department	No	Department	No	Department	No
SEWER	384	PRESSER	28	ADMINISTRATION	2
HELPER	117	PACKING & FINISHING	64	MACHENIC	10
LINE LEADER	14	IN LINE Q.C	14		
SPREADER	26	END LINE Q.C	43		
CUTTER	8	FINISHING Q.C	8		
WARE HOUSE	9	Q.A AUDITOR	5		
TRIM STOCK ROON	2	FABRIC & CUTTING QC	3		
TOTAL : 737 PERSON					

8. Factory Evaluation



BetterWork



THANK YOU!

www.jungkwang.com

Contact : Ana Yoon

Email : anayoon@jungkwang.com